

# RESPONSIVE

We listen. We're responsive.

## Superior®

Heterogeneous Semi Contract

2018



### Special Features



### Applications

- Bedrooms
- Living rooms
- Media rooms
- Waiting rooms
- Kitchens
- Canteens

### Product Description

**Superior®** is a multi-layered vinyl floor covering, 1.00 mm thick with a 0.10 mm thick wear layer, available in sheets 2.00 m wide. The product comprises a compacted under layer reinforced with a glass fibre grid and a printed all-over design that is protected by a transparent wear layer.

**Superior®** is compact, heavy duty and durable. The flooring is anti-bacterial and anti-fungal, has a group T wear rating and is suitable for medium traffic areas.

**Superior®**

Heterogeneous Semi Contract

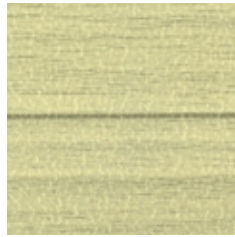


**Economical Luxury**

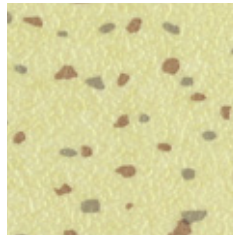
With exquisite wood designs, our 1.00mm flooring brings out the beauty of your home in a budget to your liking.



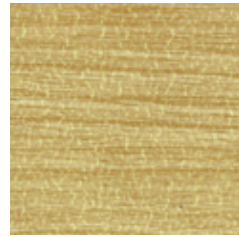
SPR - 01



SPR - 09



SPR - 12



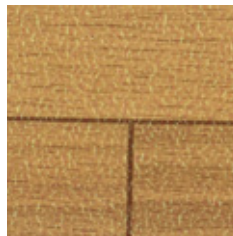
SPR - 19



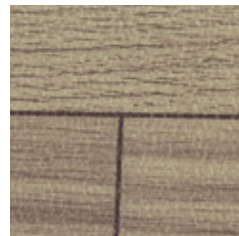
SPR - 14



SPR - 07



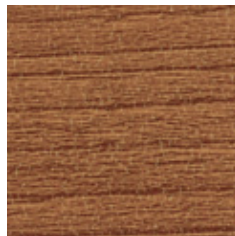
SPR - 08



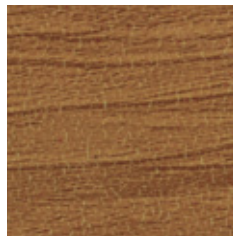
SPR - 10



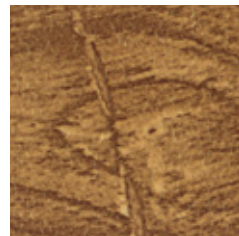
SPR - 11



SPR - 17



SPR - 18



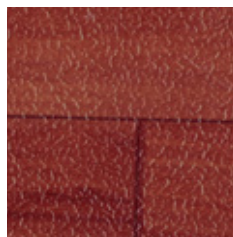
SPR - 02



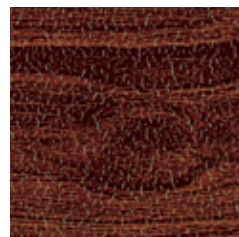
SPR - 05



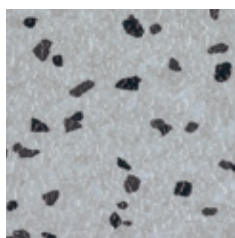
SPR - 04



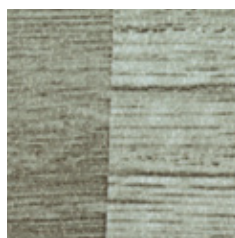
SPR - 06



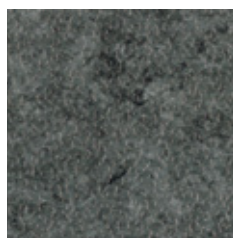
SPR - 16



SPR - 13



SPR - 03



SPR - 15

Matching welding rods are available for every colour.  
Printed shades may appear slightly different from actual samples.

# Superior®

Heterogeneous Semi Contract



Characteristics	Standards	Units	Superior®
Type of floor covering	EN ISO 10582	Type 1 - Binder Content	Heterogeneous Semi Contract
General performance	EN ISO 10874 - EN 685	Classification	21 : Moderate / Light
Special Treatment			PU Treatment
Overall thickness	ISO 24346 - EN 428	mm	1.00
Thickness of wear layer	ISO 24340 - EN 429 ASTM F410	mm	0.10
Weight	ISO 23997 - EN 430	g/m <sup>2</sup>	1600 ± 50
Sheet size	ISO 24341 - EN 426	m (Width)	2
		l (length)	20
		m <sup>2</sup> (surface area)	40m <sup>2</sup>
Abrasion resistance	EN 660 - 2	Group	T (Volume loss < 2mm <sup>3</sup> )
Castor chair test	ISO 4918 - EN 425	Type of use	Continuous
Slip resistance	DIN 51130	Ramp test	R9
Dimensional stability	ISO 23999 - EN 434	%	+/- 0.40
Flexibility	ISO 24344 - EN 435	20mm mandrel	No cracking
Residual indentation	ISO 24343 - 1 - EN 433	mm	≤ 0.10
Colour fastness to light	EN ISO 105 B02	Degrees	≥ 6
Static electrical propensity	EN 1815	kV	< 2.0
Reaction to fire	EN ISO 13501 - 1	Class	Bfl - S1

